

U.S. Export Finance Resources & Development of Viable Small and Medium Enterprises (SMEs)

Presented by:



&



Financialbridge

❖ **Financialbridge is an Export Finance and Business Credit Consulting Firm. We work with U.S. and International Financial Institutions to provide Innovative Funding Solutions to Private Companies and Government Agencies, including:**

- **Export & Import Trade Finance**
- **Project Finance**
- **Public Sector Financing**
- **Export Working Capital Loans**
- **Equity Financing**
- **Bridge Loans**

❖ **Our corporate focus is on the U.S. Export Market, the emerging markets of Africa, Central & South America and the Middle East as well as the transition economies of Eastern Europe and Southeast Asia.**

Techmodular

- ❖ **Techmodular is a Turnkey Project Development and Technical Management Company offering services that include:**
 - **Project Implementation Planning and Development**
 - **Site Engineering and Construction**
 - **Plants, Machinery & Equipment Procurement, Installation, On-Site Training & Start-up**
 - **Plant Operations, Maintenance & Management**
- ❖ **We also source and procure U.S. Trade Products and Industrial Plants & Machinery for Export, complete with Training & Expatriate Management Support for Implementation, Operations and Maintenance requirements of related projects.**

Recent Projects Successfully Financed

- **Salmon Fishery Project in Santiago, Chile - Cost of Project \$6.7million; Loan and Equity - \$5.1million**
- **Water Bottling Plant in San Felipe, Mexico - Cost of Project \$5.9million; Loan and Equity - \$4.3million**
- **12,000BPD Modular Refinery Project at Eket in Akwa Ibom State of Nigeria - Cost of phase 1 - 6,000BPD Project Implementation \$35.5million; Loan and Equity - \$26million**
- **Citric Fruit Juice Processing Project in Barracas, Argentina - Cost of Project \$9.8million; Loan and Equity - \$7.9million**
- **Pharmaceutical Project in Abuja, Nigeria – Cost of Project \$12.2 million; Loan and Equity - \$10.6million**

Projects being Packaged and Processed for Funding

- **12,000BPD Modular Refinery Project in Equatorial Guinea – Cost of Project \$87.1million and 20MMSCFD Natural Gas Gathering & Processing and LPG Bottling Projects – Cost of Project \$45.8million**
- **Micro Brewery and Water Bottling Project in Ukraine – Cost of Project \$3.5 million**
- **Aluminum Roofing Sheets and Allied Products Plant in Akwa Ibom State of Nigeria – Cost of Project \$6.6million**
- **200 Ton per day Hydrated Lime Plant in Edo State of Nigeria – Cost of Project \$16million**
- **Amusement Park Project in Accra, Ghana – Cost of Project \$10.7million**
- **Construction Equipment Purchase for Panama Canal Expansion Project – Cost \$23million**

Overview of Financial Products

- **Export & Import Trade Finance** – Trade Loans with Short-Term tenure of 12-36 months to support Export and Import Financing of transactions involving U.S. and International Companies.
- **Project Finance** – Medium Term Financing structured for start-up or expansion of existing Industrial & Commercial Projects, with repayment terms of 3 to 7 years.
- **Public Sector Financing** – Public Sector Long-Term Loans of 7-12 years for Infrastructure and Project Development, utilizing Country Sovereign Guarantees within existing Bi-lateral/Multi-lateral Agreements or Structured Commercial Credit Guarantees.
- **Export Working Capital Loans** – Facilities for U.S. Exporters that require financing to promote export of their goods or services through the use of Institutional Guaranteed Commercial Loans, with terms of 6 to 24 months.
- **Equity Financing** – Funds raised from Private or Institutional Investors through Private Placement of Shares of Common Stock of issuing companies.
- **Bridge Loans** – Short-term Loans packaged and procured for U.S. and International Companies to bridge funding gaps that are taken out through long-term or intermediate financing.

Available U.S. Export Finance Resources

Several U.S. Export Finance Banks, Business Credit Companies and Private Equity Fund Managers are extending Trade and Project Finance to Foreign Companies. There are also a number of Multilateral Financial Institutions that provide Loan Guarantees and Direct Loans as Export Finance Facilities to qualified Foreign Companies, including:

- **Export-Import Bank of the United States (U.S. Ex-Im)**
- **Overseas Private Investment Corporation (OPIC)**
- **U.S. Trade and Development Agency (USTDA)**
- **U.S. Small Business Administration (SBA)**
- **U.S. Agency for International Development (USAID)**

The Export-Import Bank of the United States (U.S. Ex-Im Bank)

Ex-Im Bank is an independent U.S. Government Agency that helps finance the export of U.S. goods and services primarily to emerging markets throughout the world. Ex-Im Bank encourages U.S. Exports through finance programs such as the Export Working Capital Guarantee Program, Export Credit Insurance, and Foreign Buyer Credit.

The U.S. Financial Institution also extends direct loans to foreign buyers or guarantees to financing intermediaries for creditworthy entities who purchase U.S. Capital goods or services. The loans and guarantees offered are for 85 percent of the U.S. exports' value. Ex-Im Bank, the official export credit agency of the United States, helps finance U.S. exports by providing loan guarantees, export credit insurance and direct loans. In fiscal year 2006, Ex-Im Bank assisted in supporting almost \$16.1 billion of U.S. exports to markets around the world. The Bank's support of small-business exports increased by more than \$500 million to \$3.18 billion from \$2.66 billion.

www.exim.gov

Overseas Private Investment Corporation (OPIC)

The Overseas Private Investment Corporation (OPIC) was established as a Development Agency of the U.S. Government in 1971. OPIC helps U.S. businesses invest overseas, fosters economic development in new and emerging markets, complements the private sector in managing the risks associated with foreign direct investment and supports U.S. foreign policy.

By expanding economic development in host countries, OPIC-supported projects can encourage political stability, free market reforms and U.S. best practices. OPIC Projects also support American jobs and exports having generated over 264,000 new U.S. jobs and \$69 billion in exports since 1971. www.opic.gov

U.S. Trade and Development Agency (USTDA)

The U.S. Trade and Development Agency (USTDA) assists in the creation of jobs for Americans by helping U.S. companies pursue overseas business opportunities.

This is accomplished through funding various forms of Technical Assistance, Feasibility Studies, Training, Orientation Visits and Business Workshops that support the development of a modern infrastructure and a fair and open trading environment. In carrying out its mission, USTDA places emphasis on economic sectors that may benefit from U.S. exports of goods and services. www.tda.gov

U.S. Small Business Administration (SBA)

The SBA provides loan guarantees to assist small exporters obtain loans from local U.S. Banks to support their export sales. **The International Trade Loan Guarantee Program of SBA helps small businesses that are either new-to-export, already engaged in exporting and seeking to expand their operation or adversely affected by competition from imports.** www.sba.gov

United State Agency for International Development (USAID)

USAID, through its Global Technology Network (GTN) Program, also facilitates transfer of U.S. Technology and Services to address Global development problems. **This is accomplished by matching a country's development needs with U.S. Firms equipped to provide appropriate technological solutions.** GTN program focuses on Agricultural Technology, Communications and Information Technology, Environmental, Energy and Health Technology. www.usgtn.net

Viabile Projects for U.S. Funding

Some of the viable and bankable Small and Medium Scale Industrial and Commercial Projects that can be established in any part of the World with funding support from the U.S. Financial Market include:

- **Modular Crude Oil Refineries**
- **Natural Gas Gathering and Processing Project**
- **Liquefied Petroleum Gas (LPG) Filling Plant**
- **Natural Gas & Diesel Power Projects**
- **Liquid Asphalt Production and Batch Plant**
- **Fertilizer Blending Plant**
- **Solid Mineral Mining and Processing Project**
- **Dredging and Commercial Sand Production Project**
- **Aluminum Roofing Sheets, Doors & Window Frames Production Plant**
- **Commercial Cassava Farming & Processing Project**
- **Plantain, Cassava and Potato Chips/Flakes Production Plant**
- **Water Bottling and Soft Drink Production Plant**
- **Fruit Juice Extraction Plant**

Viabile Projects (cont.)

- **Micro Brewery**
- **Tomato Paste Manufacturing Plant**
- **Farm Grain Storage Silos Project**
- **Meat Packing Plant**
- **Seafood Processing, Cold Storage & Distribution Project**
- **Fish, Shrimp & Crawfish Trawling Project**
- **Pre-Engineered Medical Clinic & Diagnostic Center Project**
- **Pharmaceutical Project**
- **Customized Mobile Medical Trailers and Boat Clinics**
- **Amusement Park Project**
- **Pre-Engineered 3 to 5 Star Hotels**
- **Industrial Park & Business Incubation Projects**
- **Pre-Engineered Micro-Concrete Duplexes & Townhouses**
- **Pre-Engineered 10 Bedroom Apartment Building**
- **Pre-Engineered Administrative Office & Warehouse/Factory Buildings**
- **Utility Vessels for Oil & Gas Industries**

Modular Crude Oil Refineries

Modular Crude Oil Refineries can be developed and designed with varying capacities of 2000, 6000, 10,000 & 12,000, Barrels Per Day (BPD) to refine Light or Heavy Crude Oil as Feedstock into Unleaded Gasoline, Naptha, Diesel, Kerosene/Aviation Fuel & Fuel Oil.

The Refinery Plants, Machinery and Equipment can be manufactured in Modular forms at the Manufacturers' Facilities and shipped to designated project sites for assembly, installation and start-up within 12 to 14 months. Estimated Cost: CIF, Installation, Project Implementation Management, Site Training & Start-up - From \$9.75 million through \$120 million.

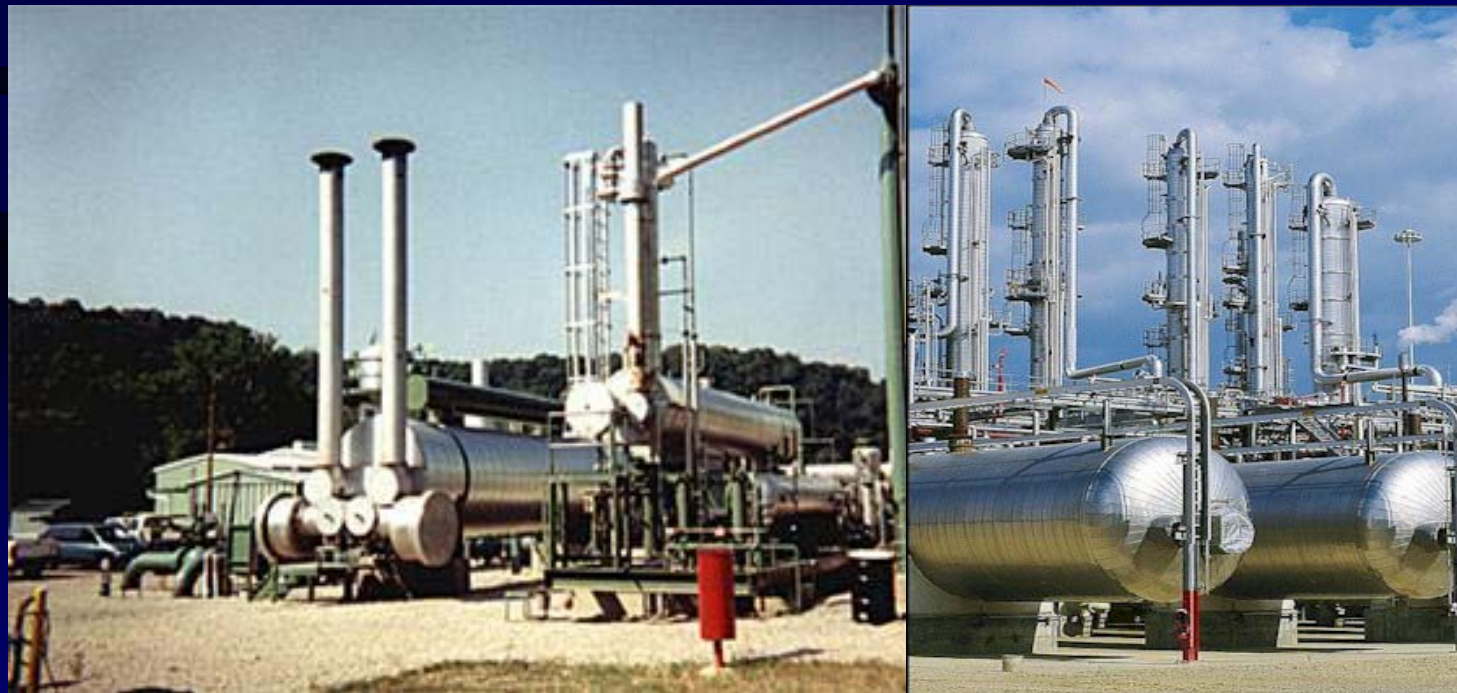


Natural Gas Gathering & Processing Project

The Plant will be capable of gathering Raw Natural Gas being flared from Wellheads / Flare-heads in the Oilfield's Natural Gas Streams as Raw Material. The Gas will then be processed to remove impurities and separated into components of Liquefied Petroleum Gas (LPG) for Commercial Bottling, Light Naphtha as an Industrial Raw Material and Lean Gas as fuel for Power Generation.

A Portable Gas Powered Electricity Co-Generation Plant can also be integrated into the Gas Gathering Project.

Estimated Cost: CIF, Installation, Training, Project Implementation Management & Start-up of a typical Gas Gathering and Processing Plant with capacity range of 5-40 Million standard cubic feet per day (mmscf/d) - From \$25million.



Liquefied Petroleum Gas (LPG) Filling Plant

An LPG Filling Plant can be established to commercially bottle Liquefied Petroleum Gas produced by a Processing Unit of the Gas Gathering Plant, or purchased as a product for Bottling for domestic consumers. LPG Filling Plants are available with capacities to bottle mix of 600-1,500 12.5kg, 15kg & 45kg cylinders per hour.

A typical LPG Filling Plant comes complete with Gas Filling Carousel with 12 Filling Heads, Piping System, Sprinkler System, Standby Power Generator, Chain Conveyor, Loading and Unloading Compressor Systems, 3 x LPG Tank Lorry Truck and Gas Storage Tanks and Pre-Engineered Factory Building.

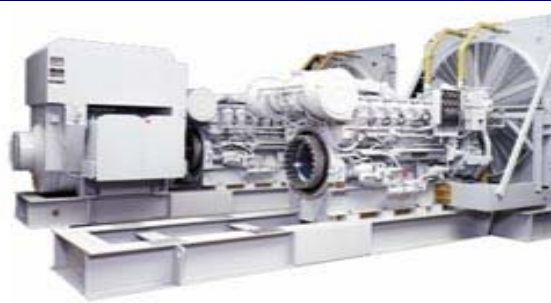
Estimated Cost: From \$3.5 million, including CIF, Installation, Training & Start-up.



Natural Gas & Diesel Power Projects

Natural Gas & Diesel Electricity Power Plants are available for installation as independent and reliable continuous-run power generating units. The capacity of each unit range between 1MW and 3.25MW designed to utilize Natural Gas connected to a pipeline from a Gas Recovery and Processing Unit or Depot as well as Diesel, as fuel to power the plants. Estimated cost: From \$980,000

The Plants can be combined in multiple units to form a large power project with generating capacity of between 15MW and +100MW per location, complete with central control system allowing multiple units to function in parallel as load is added or dropped. A compact Trailer Unit of 25 MW Gas Turbine can also be supplied within 12 months of placing order. Estimated cost: From \$16million



Liquid Asphalt Production and Batch Plant

The Liquid Asphalt Plant is designed to produce 1,000BPD – 3,000BPD of Liquid Asphalt from Crude Oil or Fuel Oil/Residium as Raw Material. The Plant can be integrated with an Asphalt Batch Line for the production of Bituminous Pavement Materials used for Road Construction and Surfacing.

The Batch Line will be capable of producing Hot Mix Asphalt for Road Patching & Paving by mixing aggregates with Liquid Asphalt and Cement to produce from 3 tons/hr. Bituminous Pavement Material.

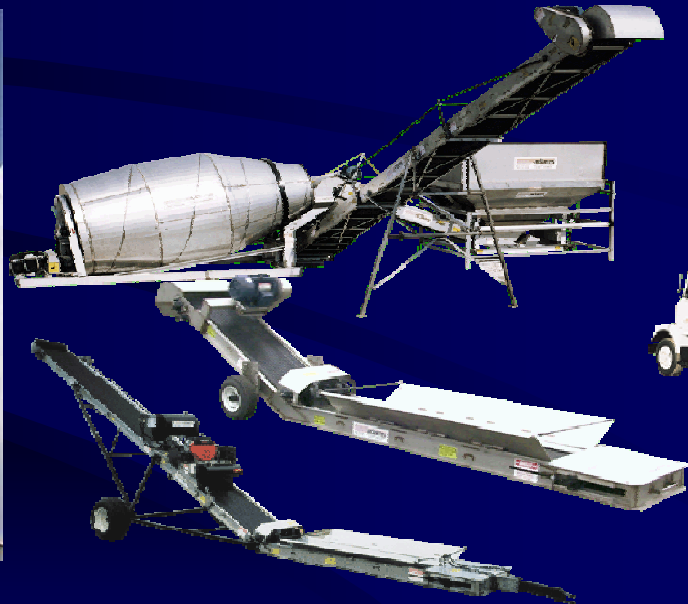
Estimated Cost: Integrated 1,000BPD Liquid Asphalt and 3 tons/hr. Batch Plant - CIF, Installation, Training & Start-up - From \$7.98 million.



Fertilizer Blending Plant

A typical Fertilizer Blending Plant will produce Multi-Nutrient Fertilizer known as NPK Fertilizer by blending raw materials of Nitrogen (N), Phosphorus (P) and Potassium (K).

The Estimated cost for Plants, Machinery and Equipment for a 60 tons per day Fertilizer Blending and Bagging Project, complete with 10,000sq. ft. Pre-Engineered Factory Building & Standby Power Plant - From \$5.85million



Solid Mineral Mining and Processing Project

A Solid Mineral Mining and Processing Project can be established to mine and process any of the local Solid Minerals available into Commercial Products and processed Exportable Raw Materials.

Limestone, Clay, Kaolin, Silica Sand, Pyrite, Bauxite, Gypsum and Copper Mining and Processing Projects can be established to produce secondary raw materials sold to the Paper, Paint, Rubber, Construction and Chemical Industries.

The Plants and Machinery for a typical Solid Mineral Mining and Processing Plant will include 200 tons per hour Crushers, Screens, Machine Feeders, Washing Equipment, Conveyors, Scales, Power Plants, Wheel Loaders, Loader Backhoes, Skid Steer Loaders, Dozers, Excavators, Scrapers, and Cranes, etc., capable of processing up to 3,200 tons per day of related solid mineral products.

Estimated Cost: CIF, Installation, Local Training, & Start-up - From \$5.75million.



Dredging and Commercial Sand Production Project

The fully equipped Dredger is capable of excavating approximately 300 cubic yards of Commercial Grade Sand per hour, utilizing 8' x 10' Dredge Pump. The Dredger uses a hydraulic, submersible 12" radial fan pump mounted at the end of the boom behind a shrouded, horizontal cutterhead. The pump is rated at 3,500-gpm slurry with a maximum T.D.H. (slurry s.g. 1.25) @ 881 rmp w/2,000 feet discharge length.

Estimated Cost – CIF, Training, Operation and Start-up: From \$559,000

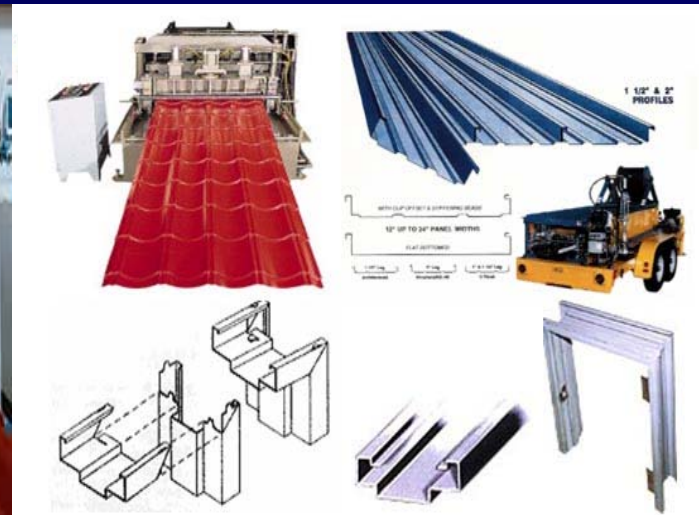


Aluminum Roofing Sheets, Doors & Window Frames Production Plant

The Main Plant will be designed to produce 16,335 Feet/Day of Corrugated Aluminum Roofing Sheets in 0.35 mm, 0.45 mm, 0.55 mm and 0.70 mm as well as 1,900 Feet/Day of Roofing Ridges, Gutters and Roofing Accessories.

The second line will produce Aluminum Door & Window Frames as well as Roof Gutters and Accessories for construction of Factory, Commercial Buildings and Private Homes, utilizing Painted Mill Finish Aluminum Coils with dimensions of 0.014"(0.35mm) x 49.213" through 0.028" (0.70mm) x 49.213" and Cold Rolled Mill Finished Aluminum Coils of various sheet thicknesses.

Estimated Cost: Complete Roofing Sheet & Window/Door Frames Lines with Pre-Engineered Factory Building, Mack Delivery Truck, Walking Pallet Trucks and Start-up Raw Materials – From \$5.9million



Commercial Cassava Farming and Processing Project

An Integrated Cassava Cultivation and Processing Project can be established as a viable commercial enterprise, utilizing available farmland to cultivate Cassava, which has very high secondary product demand as industrial raw materials, apart from the domestic consumption demand of various Cassava Food Products.

A Processing Unit will be designed to process 100 to 500 Tons per day of Raw Cassava into Industrial / Commercial Starch and other mixed products of Flour, Garri, Chips, Pellets, Animal Feed and or Glucose Syrup/Powder. The Cassava Farming aspect of the project will be capable of employing over 3,000 workers and cultivate from 500 through 1,000 hectares of farmland.

Estimated Cost: Cassava Farming Project - From \$5.75 million.

Estimated Cost: Cassava Processing Plant of 100 tons to 500 tons per day covering CIF, Installation, Training, & Start-up – From \$4.8 million through \$11million,



Plantain, Cassava and Potato Chips/Flakes Production Plant

The Plant will be designed to process up to 6,500lbs/hr of mixed Raw Materials of Plantain, Cassava and Potato into Chips and Flake Products, packaged in 6oz to 20oz Pre-Printed Packs. Estimated Cost: Complete Chips and Flakes Production Plant & Support Facilities including CIF, Installation, Training & Start-up – From \$2.38million



Water Bottling and Soft Drink Production Plant

The Plant will be capable of processing and bottling up to 56,000 Gallons of Water per day from the Project Site Borehole or Municipal Water, into Spring Grade Bottled Water, packed in .5, 1 and 5 Liter PET Bottles. The Plant will also produce 900 Gallons of Carbonated Soft Drinks in different flavors, packed in 12oz & 24oz PET Bottles.

The Plant will be capable of producing PET Bottles from its Blow Molding Equipment. The list of Equipment will include Automatic Bottle Unscrambler, Automatic Case Packer, PET Bottle Molds, Cleanroom Air Filtration and Pressurization System, Borehole Pumps and 1,000 KVA Standby Electric Diesel Power Generator. The Plant will also have Carbonation Equipment for Soft Drink Production and 10,000 sq. ft. Pre-Engineered Factory Warehouse Building. Estimated Cost: Complete Water Bottling and Soft Drink Plant, including CIF, Installation, Training & Start-up – From: \$3.6million.



Fruit Juice Extraction Plant

The Plant will be capable of processing 100 Tons/Day of various types of Fruits into mixed 85,000 Litres/Day of Fresh Juice and Concentrates. The Bottling Line will have the capacity of producing 2,000 Bottles of Juice Drinks per hour, in 0.5, 1 or 1.5 Liter PET Bottles. The Plant will also be capable of Producing Spring Grade Water packed in PET Bottles.

The Plant will be designed to wash, prepare and juice a range of Citrus and Tropical Fruits, blending of Fortified Water and Juice based Products, Flash Pasteurization and Sanitizing of the Filling System, PET Bottles and 28mm Screw Caps.

Estimated Cost: Complete Juice Extraction & Bottling line and Water Bottling Line, including CIF, Installation, Training & Start-up – From \$6.5million.



Micro Brewery

The Micro Brewery will be designed with initial annual capacity of 15,000 Hectoliters/Year and expandable to 100,000 Hectoliters/Year, to produce Lager Beer and Malted Beverages in 12oz and 22oz Glass and PET Bottles. The Micro Brewery will also be capable of producing Bottled Water and Soft Drinks (soda) in various sizes of PET Bottles.

The Micro Brewery will come complete with the Main Brewery, Water & Soft Drink Lines, 12,000 sq. ft. Pre-Engineered Factory Building with Interconnecting Plumbing and Electrical Fittings, Packaging Line, Standby Generator, PET Blow Molding Line, etc.

Estimated Cost: Including CIF, Installation, Training & Start-up – From \$5.5million.



Tomato Paste Manufacturing Plant

The Tomato Paste Manufacturing Plant will be capable of processing between 2,500 to 6,000 metric tons of Tomato into Canned Tomato Paste Products. The Project will require the support of Small Holders Farmers (SHF) or Cooperatives to cultivate between 70 to 150 hectares of farmland.

A small scale Plant is capable of producing 30 to 40 - 12oz / 340grams Cans of Tomato Paste per minute. Estimated Cost: Including Processing Plants & Machinery, 10,000sq. Ft. Pre-Engineered Factory Building, Standby Power Plant & Support Facilities – From \$5.75million.

A medium scale Plant is capable of producing 90 to 100 - 12oz / 340grams Cans of Tomato Paste per minute. Estimated Cost: Including Processing Plants & Machinery, 16,000 sq. ft. Pre-Engineered Factory Building, Standby Power Plant & Support Facilities – From \$9.25million.



Farm Grain Storage Silos Project

The Farm Grains Storage Silos Project will have capacities to process and store 5,000MT of Corn and can be expanded to +20,000MT. Each Project will come complete with Storage Silos, Drying Facilities, Loading and Unloading Bays, Drying Control System and Pre-Engineered Factory/Warehouse Building, Bulk Elevators, Truck Weigh Bridge, 1MW Power Plant and Silos Support Accessories.

Estimated Cost: Of a 5,000MT Grain Storage Project including CIF, Installation, Training, & Start-up – From \$3.3million



Meat Packing Plant

The Meat Packing Plant will be capable of processing a mix of 10 – 40 units of cattle, 40-80 goats, 30–60 pigs, per 12 hour day, packed in branded Pre-printed Packs and Cartons for Cold Storage and Distribution. The final Meat Products will be delivered in Refrigerated Trucks to contracted Marketers, Supermarkets, Meat Shops, etc., interested in Processed Quality Meat Products free of contamination and spoilage.

Regular supply of commercial quantities of Cattle, Goats & Pigs can be sourced from local Ranchers and Farmers. The livestock will then be inspected for good health, slaughtered and processed into meat cuts like Steaks, Middle Meats, Top Sirloin, Brisket, etc. Other parts of the meat would be further cut into the traditional and added value products as well as processed into Sausage, Bacon, Smoked Meats and Beef Jerky, etc.

Estimated Cost: Of a typical Meat Packing Plant including 10,000 to 16,000 sq. ft. Pre-Engineered Factory Building, Slaughterhouse, Processing Equipment, Smokehouse, Sausage and Bacon Production Equipment, Freeze Packing Equipment, Cold Storage and Refrigeration Systems, Sanitation Equipment, Tools and Accessories, Power Plant, Refrigerated Trucks, Pre-Printed Packing Materials, etc., plus CIF, Installation, Training, & Start-up – From \$4.85million



Seafood Processing, Cold Storage & Distribution Project

The Seafood Processing Project will be capable of processing 10-12 tons per 12 hour day of Fresh Fish - Tilapia, Grouper, Catfish, etc., as well as Shrimps and Crawfish.

The Project will utilize 14,000 sq. ft. Pre-Engineered Processing Facility and 6,000 sq. ft. Refrigerated Warehouse, located in any Coastal Fishing Community that will be capable of processing Fresh Fish, Crawfish and Shrimps purchased from local Fisherman and Fishing Cooperatives for processing and distribution through a Network of up to ten (10) Fish Shops to be located throughout the country. The Project will also incorporate Smokehouse Equipment capable of producing Smoked Fish & Crawfish Products for International and Local sales. Estimated Cost: Including CIF, Installation, Training, & Start-up – From \$5.75million.



Fish, Shrimp & Crawfish Trawling Project

Available U.S. manufactured and Pre-Owned fully refurbished Fish, Shrimp/Crawfish Trawlers are in average of 8-15 years old and powered by engines of various models, max speed of 20-40 knots, complete with Navigation / Radio Equipment, GPS Fish/Shrimp Finders, Crew Cabins, Refrigerated Fish/Shrimp Holds and Fiberglass Work Area on Deck. Estimated Cost: Including Cost of Pre-owned Vessel, Refurbishing & Training – From \$950,000 through \$7.1 million.



Pre-Engineered Medical Clinic & Diagnostic Center Project

The 3060 sq. ft. Pre-Engineered fully equipped Medical Clinic and Diagnostic Center Project will come complete with six (6) Examination Rooms, Records Room, Laboratory & Medical Diagnostic Area, Lounge Area, Receptionist and Lobby Areas, Nurses Station and three (3) Doctors Offices and Storage Room. The Medical Clinic and Diagnostic Center is ideal for rural locations where medical staff provide Doctors' consultations and dispensation of medications, as well as Laboratory and Diagnostic Testing, with capacity for a minimum of three Doctors and nine Nurses to diagnose and treat over 1,000 patients per week.

The Pre-Fabricated Medical Clinic and Diagnostic Center will be shipped in Modular Form for installation at the designated Project Site to provide a wide range of cost effective delivery of Health Care, Medical Treatment and Diagnostic Services to Screen and Treat Patients suffering from a wide range of Epidemics and other Medical Conditions. The Centers will be equipped to provide services that would include:

- General Checkup & Treatment
- Laboratory & Diagnostic Testing for Blood, Urine and Pap Smears Analysis
- HIV/AIDS, Malaria, Typhoid and Diabetes Treatment, etc.
- Ultrasound, Mammography, Radiography (X-rays) and EKG Services

Estimated Cost: 3060 sq. ft. fully equipped Pre-Fabricated Medical Clinic & Diagnostic Center including shipping and installation – From \$3.85million.



Pharmaceutical Project

The Pharmaceutical Plant will be capable of manufacturing and distributing Licensed Generic Drugs and Medications for the treatment of major diseases, including HIV/AIDS, Malaria, Tuberculosis, Diabetes, Typhoid Fever, Hypertension, etc. The Project can also be designed to incorporate production of Wound Care Accessories and mixed IV Solution Products in 500m.l. and 1-liter Plastic Bags.

The main Plants, Machinery and Equipment will include Tablets & Capsules Manufacturing Line, Capsule Filling Line, Class 10,000 Clean Rooms with HEPA Filters & Accessories, Machinery and Equipment for production of Wound Care Materials and Accessories and Production Line for IV Solutions Products, etc.:

Support Equipment & Accessories will include complete Lab Equipment and Accessories, Air Conditioning Systems for Climate Controlled Clean/Production Rooms, Computers, Production, Accounting & Management Software, Satellite Wireless Communication System, 650 KVA Standby Duty Generator, 16,000 Pre-Engineered Office and Factory Building and Material Handling Equipment, etc.

Estimated Cost - CIF, Installation and Start-up - From \$12.75 million

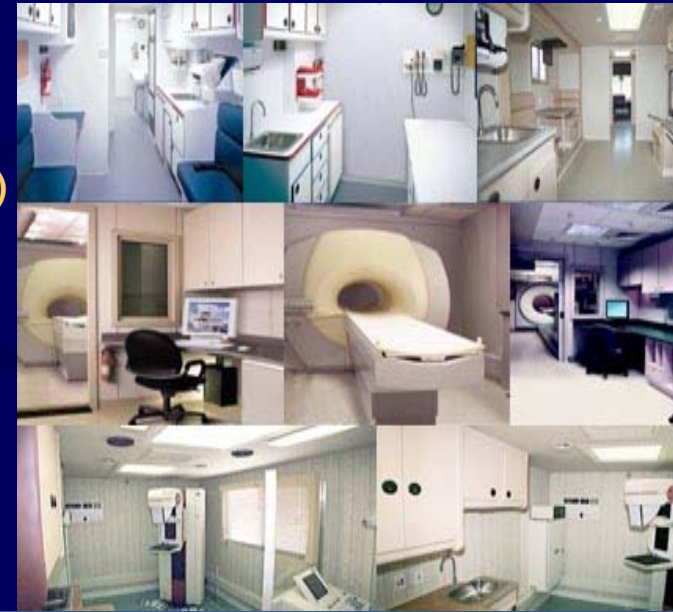


Customized Mobile Medical Trailers and Boat Clinics

Customized Mobile Medical Trailers and Boat Clinics provide a wide range of cost effective delivery of Health Care and Medical Treatments to remote locations on land and river settlements. The Mobile Medical Trailers and Boats are tailor-made to the specifications of relevant medical applications. Some of the customized Mobile Medical Solutions include:

- General Checkup & Disease Treatment Units
- Mobile Laboratory for Blood, Urine and Pap Smears Analysis
- Ultrasound, Mammography, and Radiography (X-rays), & EKG Unit
- Positron Emission Tomography (PET) / Computed Tomography (CT)
- Mobile Ophthalmology Clinic and Dental Care and Procedure Unit
- Others as to clients' specifications

Estimated Cost: From \$375,000 for Medical Trailer and \$950,000 for Boat Clinic



Amusement Park Project

An International Standard Amusement Park Project can be designed to provide leisure to the public, complete with Popular Rides, Indoor/Outdoor Soft Playground Equipment as well as a wide range of Entertainment Attractions. Estimated Cost: Including cost of Pre-Engineered Game Hall, Rides and Support Plants, Machinery and Equipment, Shipping, Installation, Local Site Development Costs, Training, Commissioning and Start-up From \$10.7million.



Pre-Engineered 3 to 5 Star Hotels

Pre-Engineered 3 to 5 Star Hotels with 80 to +120 Rooms can be designed and developed at any location, complete with Civil Engineering and Foundation Construction, Installation, Furnishing, Room TVs, Telephone and Internet Network Systems, Standby Power Generators, Standard Swimming Pool, Tennis Court and Dry-Run of all Equipment & Fittings – Key in Hand.

Any of the Hotel Projects can be designed to incorporate Conference Centers and other Facilities as may be required by the Project Promoter. The Hotels can be Contract Managed for five to ten years by Expatriate Management Companies or licensed to operate under any of the leading Hotel Franchises.

Estimated Cost: From \$14.8 million for a 3 to 4 Star 80 Room Hotel and \$25million through \$45million for a 5 Star +120 Room Hotel - Turnkey Delivery, Key in Hand.



Industrial Park & Business Incubation Project

Industrial Parks and Business Incubation (IPBI) Projects are ideal for Emerging Markets and Transition Economies, capable of nurturing the development of entrepreneurial companies during the start-up period and provide direct and indirect business support services tailored to start-up firms.

An IPBI can provide its incubation tenants and clients a full array of manufacturing options that could include new Product Development, Pilot Processing and Testing, Shared-Use and Contract Processing within a state-of-the-art, fully-equipped Processing Facilities as well as Business Development, Market Research, Product and Process Development, Workforce Development & Training, Manufacturing Support, Quality Assurance, Safety Assessment and Analysis.

Depending on final Equipment and Processing Plants & Machinery configuration, an IPBI can be established in a 7-12 hectare site with the structure housing the project's Incubator and Pilot Process Complex and its main Incubation Facilities to include Office Suites, Conference Rooms, Internet Cafés, Manufacturing Floor Areas, Intercom and Paging Systems, Storage Units, etc. Estimated Cost: From \$7.5 million - Turnkey Delivery, Key in Hand.

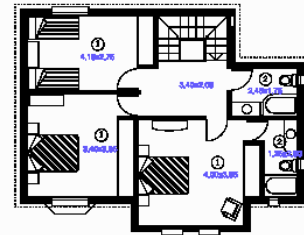


Pre-Engineered Micro-Concrete Duplexes and Townhouses

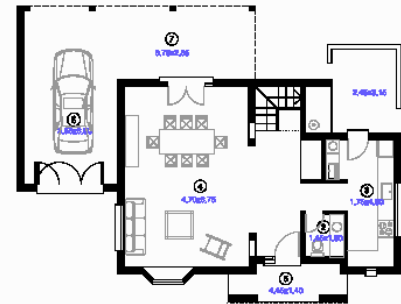
The Pre-Engineered Duplexes & Townhouses come complete with Micro-Concrete Walls and can be developed with 3-4 Bedrooms, 1½ - 2 Bathrooms, Living Room/Dining Room, Kitchen, Entry Porch and Balcony, with total floor space from 1,020 to +1,586 sq. ft., Turnkey Delivery, Key in Hand. **Estimated Cost: From \$101,940**



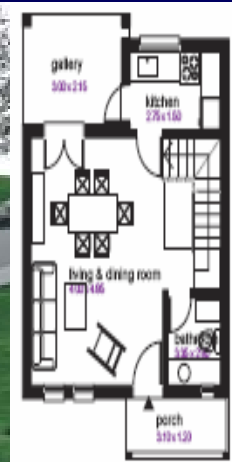
front view / tegada / fachada



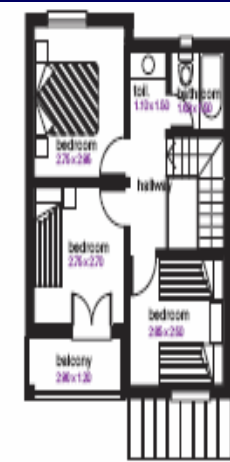
2st. floor plan / premier etage / planta alta



1st. floor plan / rez de chaussée / planta baja



FIRST FLOOR PLAN



SECOND FLOOR PLAN

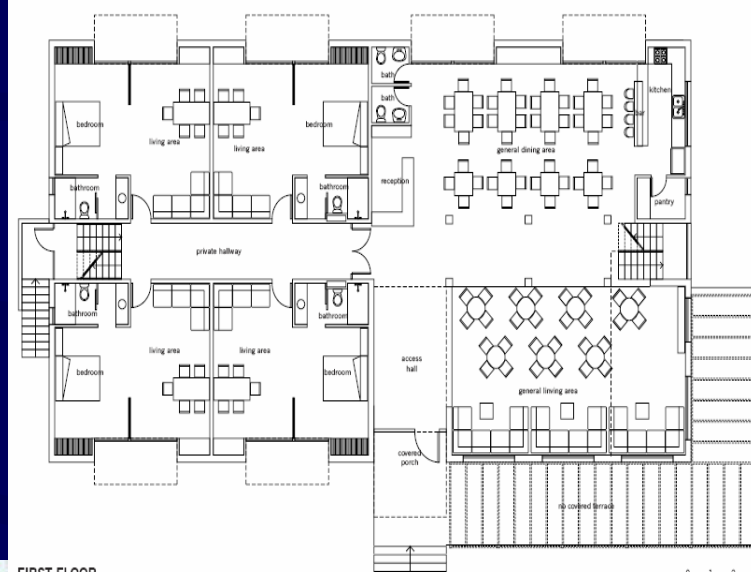


FRONT SIDE

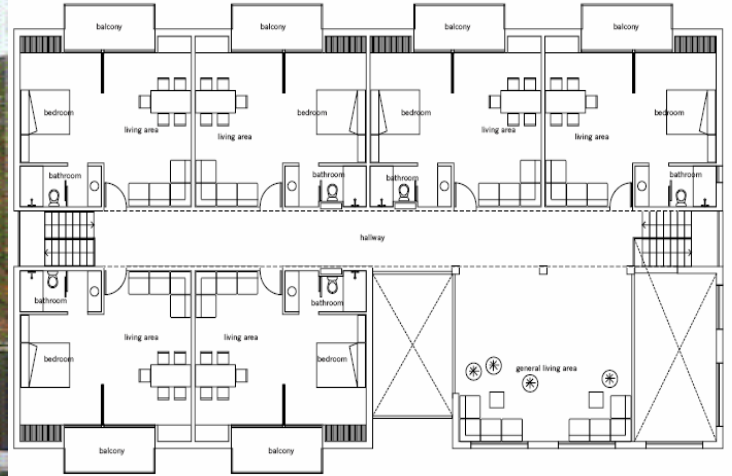
Pre-Engineered 10 Bedroom Apartment Building

Pre-Engineered 10-Bedroom Apartment Buildings can be turnkey constructed, complete with Structural Steel Design, Structural Framing, Roof and Wall Covering, Painting, Accessories, Building Anchorage and Foundations, Erection and Installation, with 10,396 sq. ft. of total Space.

Estimated Cost: From \$1.2million - Turnkey Delivery, Key in Hand



FIRST FLOOR



SECOND FLOOR



Pre-Engineered Administrative Office & Warehouse/Factory Buildings

The Pre-Engineered Office and Industrial Buildings are designed as support facilities to house various types of Commercial and Industrial Plants, Machinery and Equipment. The Buildings come complete with Structural Steel Design, Structural Framing, Roof and Wall Covering, Painting, Accessories, Building Anchorage and Foundation Construction, Erection and Installation. Administrative Office to consist of 4,127 sq. ft. covered area with 3,270 sq. ft. of total Office Floor Space and Warehouse/Factory Buildings with Factory Floor Space of 10,000 sq. ft., 16,000sq.ft or 20,000 sq. ft. The Buildings are Turnkey Designed, Fabricated and Constructed at designed Project Site - Key in Hand. Estimated Cost: From \$995,000.



Utility Vessels for Oil & Gas Industries

Available Pre-Owned Utility Vessels can be purchased and fitted to satisfy Buyers' requirements for transportation of Crews, Cargo and Supplies as well as Fire Fighting, Rescue and Technical Support Services to Offshore/Coastline Drilling Platforms operated by Oil Majors in any Oil Producing Region. Estimated Cost: From \$700,000 through \$4million.



Thank you



&

